



Madison, Wisconsin

INDEX OF SHEETS

TITLE	1	TITLE
SHEET NO.	D1 - D-2	DETAILED LINING LISTS
SHEET NO.	P1 - P2	UTILITY PLANS

# CITY OF MADISON

## CITY ENGINEERING DIVISION

### DEPARTMENT OF PUBLIC WORKS

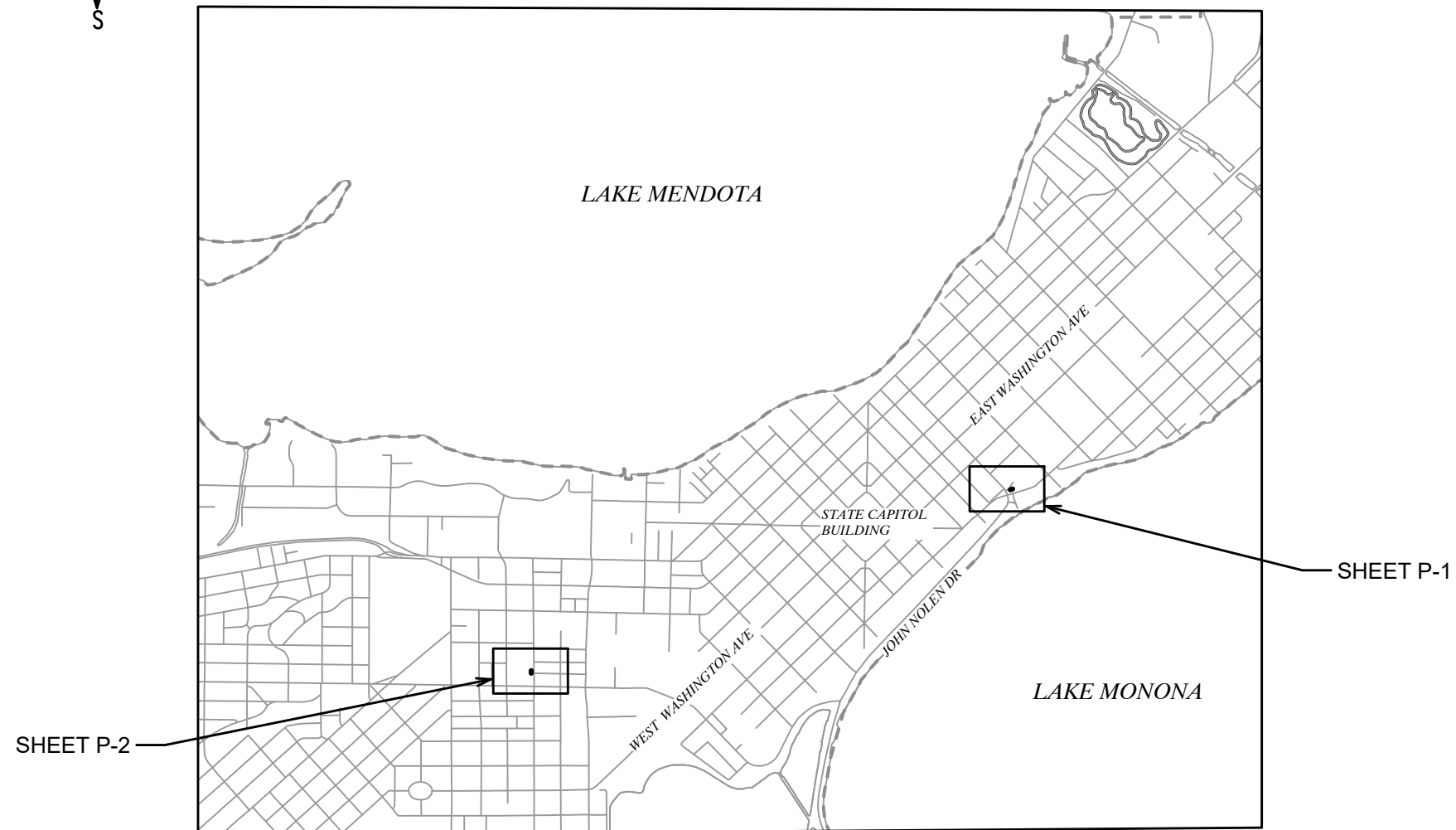
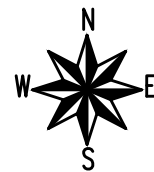
# PLAN OF PROPOSED IMPROVEMENT

## CIPP LINING REHABILITATION - BLAIR STREET SANITARY SEWER SIPHON

&

## CIPP LINING REHABILITATION - NORTH MILLS STREET SANITARY SEWER SIPHON

CITY PROJECT NO. 15295 (BLAIR), 15380 (MILLS)  
CONTRACT NO. 9536



PUBLIC IMPROVEMENT PROJECT APPROVED

JULY 16, 2024 (BLAIR)  
AUGUST 6, 2024 (MILLS)

BY THE COMMON COUNCIL  
OF MADISON, WISCONSIN

PUBLIC IMPROVEMENT DESIGN APPROVED BY:

Aug 15, 2024

City Engineer

Date

SANITARY SEWER  
DESIGNED BY:



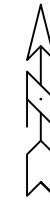
Aug 15, 2024

PLOT SCALE: 1 IN. = 1 FT. XREF

PLOT NAME: ---

REV. DATE: 8/5/2024 12:22 PM

ORIGINATOR: CITY\_OF\_MADISON



LOCATION	U.S. STRUCT.	D.S. STRUCT.	DIA (IN)	LENGTH (LF)	MATERIAL	LATERALS	SHEET
BLAIR STREET SIPHON	SAS5249-007	SAS5249-006	8	39	DUCTILE IRON	0	P-1

**NOTES:**

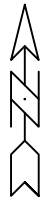
- 1) THE SANITARY SEWER SHALL BE LINED USING THERMAL CURE METHODS.
- 2) GROUNDWATER INFILTRATION HAS HISTORICALLY BEEN OBSERVED IN THE PIPE TO BE LINED THROUGH MULTIPLE HOLES, INCLUDING A LARGE HOLE LOCATED APPROXIMATELY 6 FEET UPSTREAM OF SAS5249-006. THE CONTRACTOR SHALL STOP GROUNDWATER INFILTRATION INTO THE PIPE PRIOR TO LINING. SEE SPECIAL BID ITEM 90001 - GROUNDWATER INFILTRATION CONTROL.
- 3) THE SEWER SIPHON REROUTES SANITARY GRAVITY SEWER BELOW AN EXISTING 72"X113" HERCP ELLIPTICAL STORM PIPE DRAINING TO LAKE MONONA.
- 4) THE AERIAL PHOTOGRAPH SEEN ON THIS SHEET IS OUTDATED AND DOES NOT REFLECT THE CURRENT CONFIGURATION OF THIS INTERSECTION. THE CONTRACTOR SHALL VISIT THE SITE PRIOR TO STARTING WORK TO BECOME FAMILIAR WITH THE AREA.
- 5) JOHN NOLEN DR & S BLAIR ST ARE BOTH PART OF US HIGHWAY 151. IF NECESSARY, THE CONTRACTOR SHALL BE RESPONSIBLE FOR OBTAINING ANY PERMITS REQUIRED TO OCCUPY AND/OR WORK WITHIN THE HIGHWAY RIGHT OF WAY DURING THIS PROJECT.

MARK	REVISION	DATE	BY
15295		06/20/24 12:27 PM	NTS

15295  
D-1 DETAILED LINING LIST  
CIPP LINING REHABILITATION - BLAIR STREET SANITARY SEWER SIPHON MADISON, WI  
15295  
9536  
CONTRACT NO:  
\\Fps2\data2\Encommon\Trenchless\2024\_MHZ\MH\15295-BLAIR\_ST\_SIPHON\CAD\15295\_Plans.dwg



15295  
D-1



LOCATION	U.S. STRUCT.	D.S. STRUCT.	DIA (IN)	LENGTH (LF)	MATERIAL	LATERALS	SHEET
NORTH MILLS STREET SIPHON	SAS4652-016	SAS4652-015	8	40	DUCTILE IRON	0	P-2

**NOTES:**

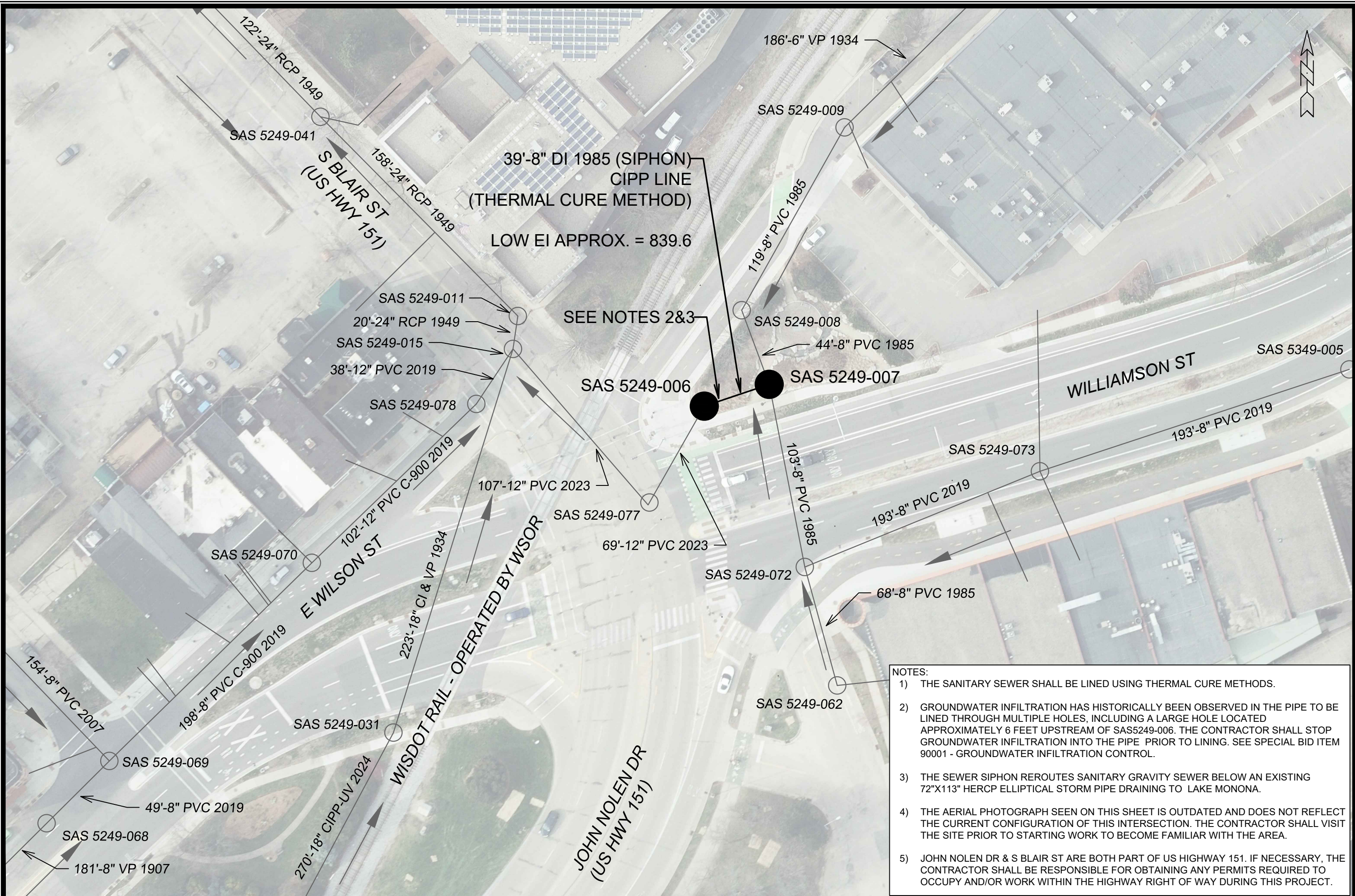
- 1) THE SANITARY SEWER SHALL BE LINED USING THERMAL CURE METHODS.
- 2) GROUNDWATER INFILTRATION HAS HISTORICALLY BEEN OBSERVED IN THE PIPE TO BE LINED THROUGH MULTIPLE HOLES. THE CONTRACTOR SHALL STOP GROUNDWATER INFILTRATION INTO THE PIPE PRIOR TO LINING. SEE SPECIAL BID ITEM 90001 - GROUNDWATER INFILTRATION CONTROL.
- 3) THE CONTRACTOR SHALL INSTALL DEWATERING WELLS AS NEEDED TO PRE
- 4) THE SEWER SIPHON REROUTES SANITARY GRAVITY SEWER BELOW AN EXISTING 11'X5' STORM BOX THAT ULTIMATELY DRAINS TO LAKE MONONA.

MARK	REVISION	DATE	BY
15380		Date: 06/20/24 12:27 PM	Scale: NTS

15380  
D-2 DETAILED LINING LIST  
CIPP LINING REHABILITATION - N MILLS STREET SANITARY SEWER SIPHON MADISON, WI  
\\Fs2\data2\Encommon\Trenchless\2024\_MHZ\MH\15380-MILLS ST SIPHON\CAD\15380 Plans.dwg  
CONTRACT NO: 9536



15380  
D-2



39'-8" DI 1985 (SIPHON)  
CIPP LINE  
(THERMAL CURE METHOD)  
LOW EI APPROX. = 839.6

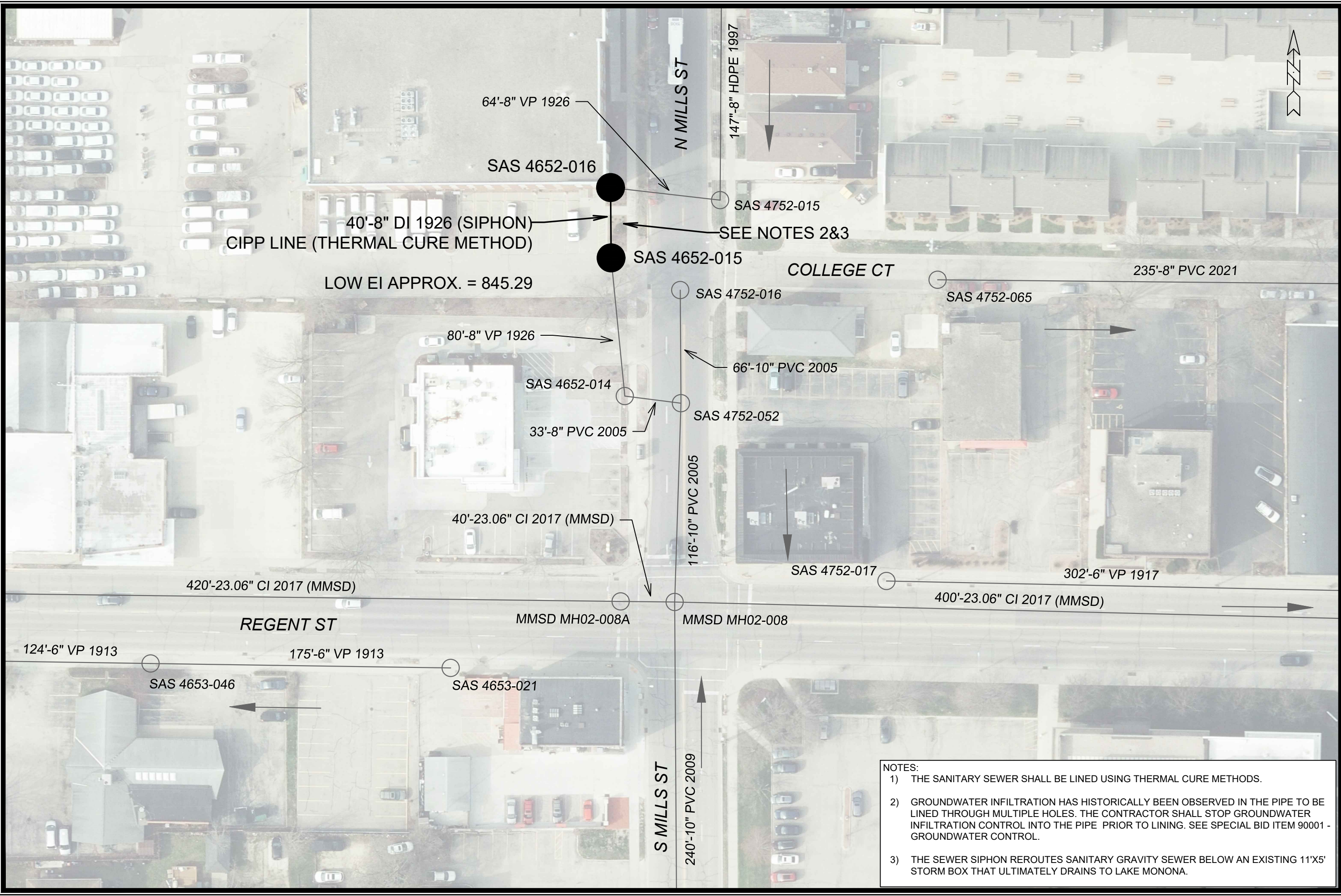
SEE NOTES 2&3

- NOTES:
- 1) THE SANITARY SEWER SHALL BE LINED USING THERMAL CURE METHODS.
  - 2) GROUNDWATER INFILTRATION HAS HISTORICALLY BEEN OBSERVED IN THE PIPE TO BE LINED THROUGH MULTIPLE HOLES, INCLUDING A LARGE HOLE LOCATED APPROXIMATELY 6 FEET UPSTREAM OF SAS5249-006. THE CONTRACTOR SHALL STOP GROUNDWATER INFILTRATION INTO THE PIPE PRIOR TO LINING. SEE SPECIAL BID ITEM 90001 - GROUNDWATER INFILTRATION CONTROL.
  - 3) THE SEWER SIPHON REROUTES SANITARY GRAVITY SEWER BELOW AN EXISTING 72"X113" HERCP ELLIPTICAL STORM PIPE DRAINING TO LAKE MONONA.
  - 4) THE AERIAL PHOTOGRAPH SEEN ON THIS SHEET IS OUTDATED AND DOES NOT REFLECT THE CURRENT CONFIGURATION OF THIS INTERSECTION. THE CONTRACTOR SHALL VISIT THE SITE PRIOR TO STARTING WORK TO BECOME FAMILIAR WITH THE AREA.
  - 5) JOHN NOLEN DR & S BLAIR ST ARE BOTH PART OF US HIGHWAY 151. IF NECESSARY, THE CONTRACTOR SHALL BE RESPONSIBLE FOR OBTAINING ANY PERMITS REQUIRED TO OCCUPY AND/OR WORK WITHIN THE HIGHWAY RIGHT OF WAY DURING THIS PROJECT.

MARK	REVISION	DATE	BY
15295			
Designed By: EAC	Date: 06/20/2024	12:28 PM	Scale: NTS
			P-1

15295  
 P-1 UTILITY PLAN  
 CIPP LINING REHABILITATION - BLAIR STREET SANITARY SEWER SIPHON  
 MADISON, WI  
 CONTRACT NO: 9536  
 W:\ps2\data2\Encommon\Trenchless\2024\_MHZM\15295-BLAIR ST SIPHON\CAD\15295 Plans.dwg





- NOTES:**
- 1) THE SANITARY SEWER SHALL BE LINED USING THERMAL CURE METHODS.
  - 2) GROUNDWATER INFILTRATION HAS HISTORICALLY BEEN OBSERVED IN THE PIPE TO BE LINED THROUGH MULTIPLE HOLES. THE CONTRACTOR SHALL STOP GROUNDWATER INFILTRATION CONTROL INTO THE PIPE PRIOR TO LINING. SEE SPECIAL BID ITEM 90001 - GROUNDWATER CONTROL.
  - 3) THE SEWER SIPHON REROUTES SANITARY GRAVITY SEWER BELOW AN EXISTING 11'X5' STORM BOX THAT ULTIMATELY DRAINS TO LAKE MONONA.

MARK	REVISION	DATE	BY

15380  
 P-2 UTILITY PLAN  
 CIPP LINING REHABILITATION - N MILLS STREET SANITARY SEWER SIPHON MADISON, WI  
 I:\FPS2\DATA2\Encommon\Trenchless\2024\MHZMH\15380-MILLS ST SIPHON\CAD\15380 Plans.dwg  
 CONTRACT NO: 9536  
 15380  
 P-2



15380  
P-2